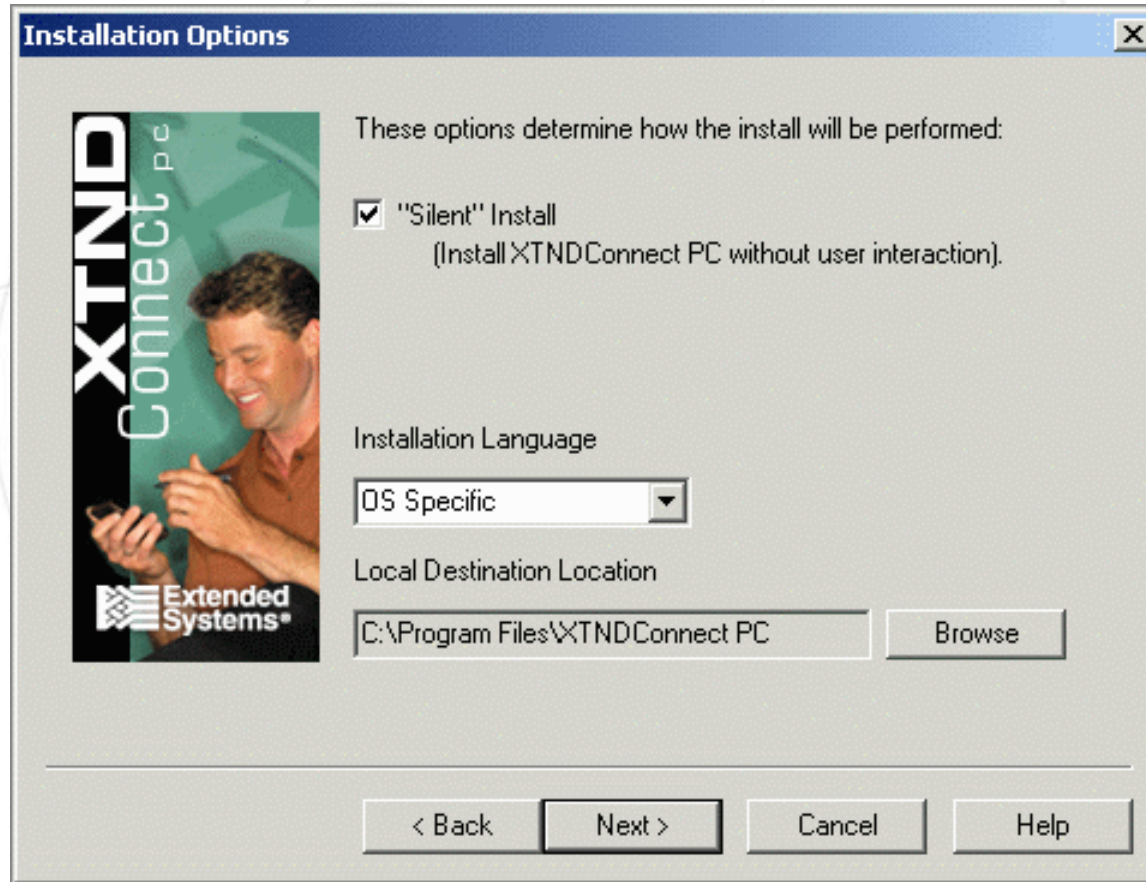


XTNDConnect PC IT Config Wizard

**Gerd Uitdewilligen
Product Manger**

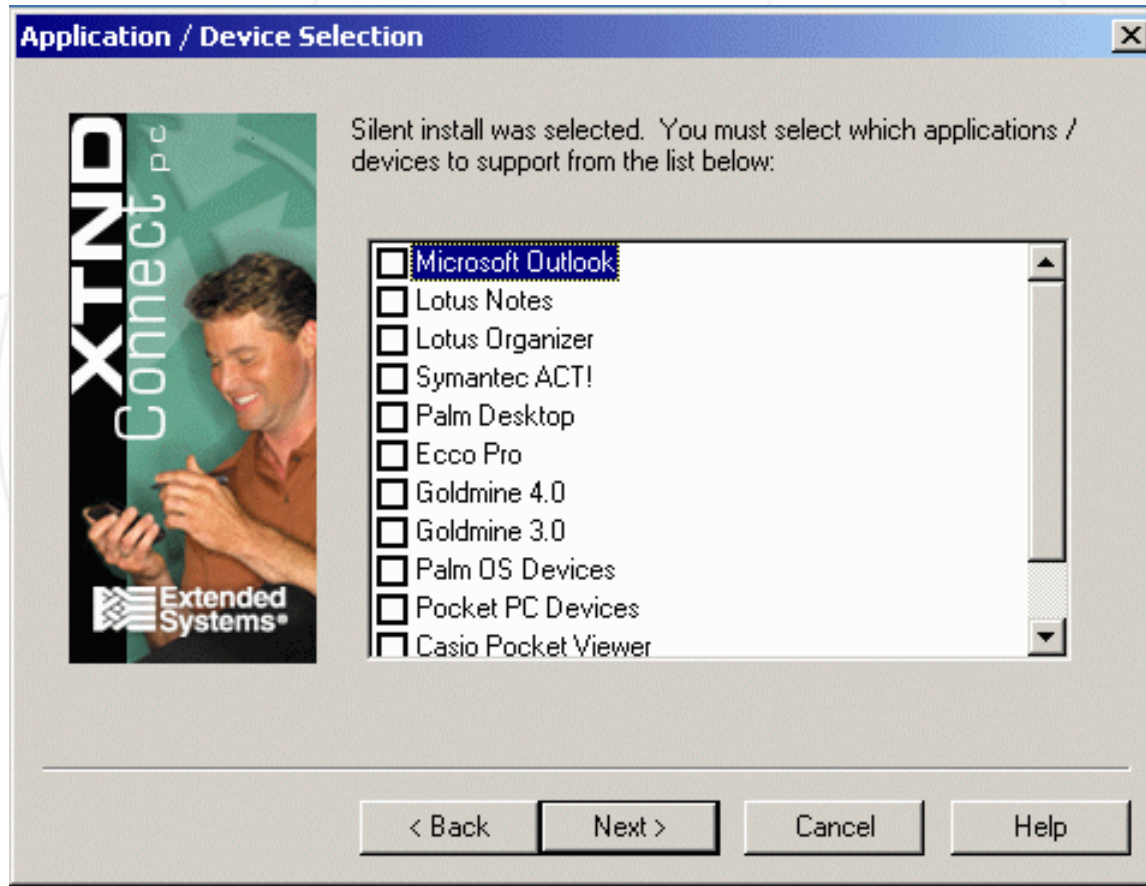
Installation Options



The screenshot shows a Windows-style dialog box titled "Installation Options". On the left side, there is a vertical banner with the text "XTND Connect pc" and a photograph of a man smiling while looking at a mobile device. Below the banner is the "Extended Systems" logo. The main area of the dialog contains the following elements:


- A heading: "These options determine how the install will be performed:"
- A checked checkbox labeled "'Silent' Install" with the subtext "(Install XTNDConnect PC without user interaction)."
- A section titled "Installation Language" with a dropdown menu currently set to "OS Specific".
- A section titled "Local Destination Location" with a text box containing "C:\Program Files\XTNDConnect PC" and a "Browse" button to its right.
- At the bottom, four buttons: "< Back", "Next >", "Cancel", and "Help".

Applications/Devices



Data Types

Datatypes [X]



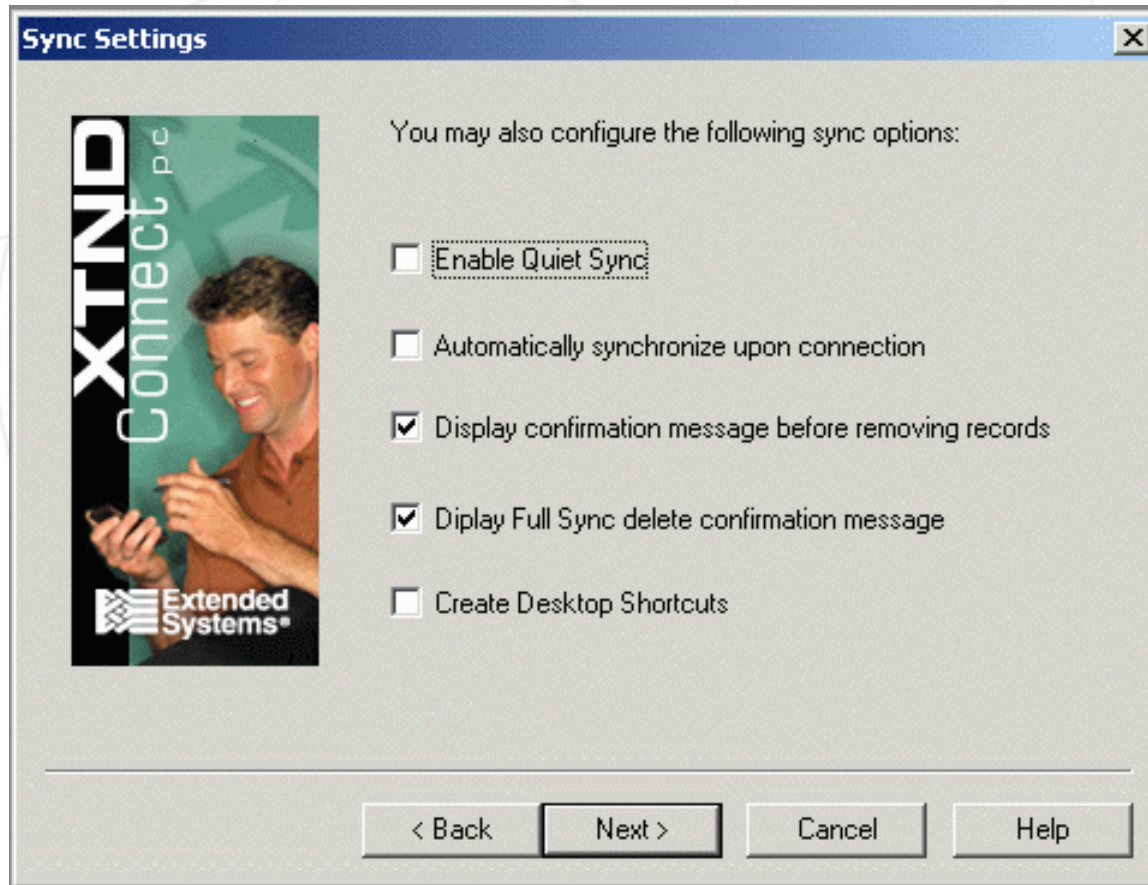
Select all data types you want to be synchronized by default.

Unchecked data types will still be available for sync, but the user will have to enable them manually.

- Contacts
- Calendar
- Tasks
- Email
- Notes


< Back Next > Cancel Help

Sync Settings



Logging Screen

Logging [X]



You may configure the following options for the XTNDConnect PC log:

Log File

Previous Log File

Log Level

Store all the log files for days

< Back Next > Cancel Help

Automatic update distribution

